

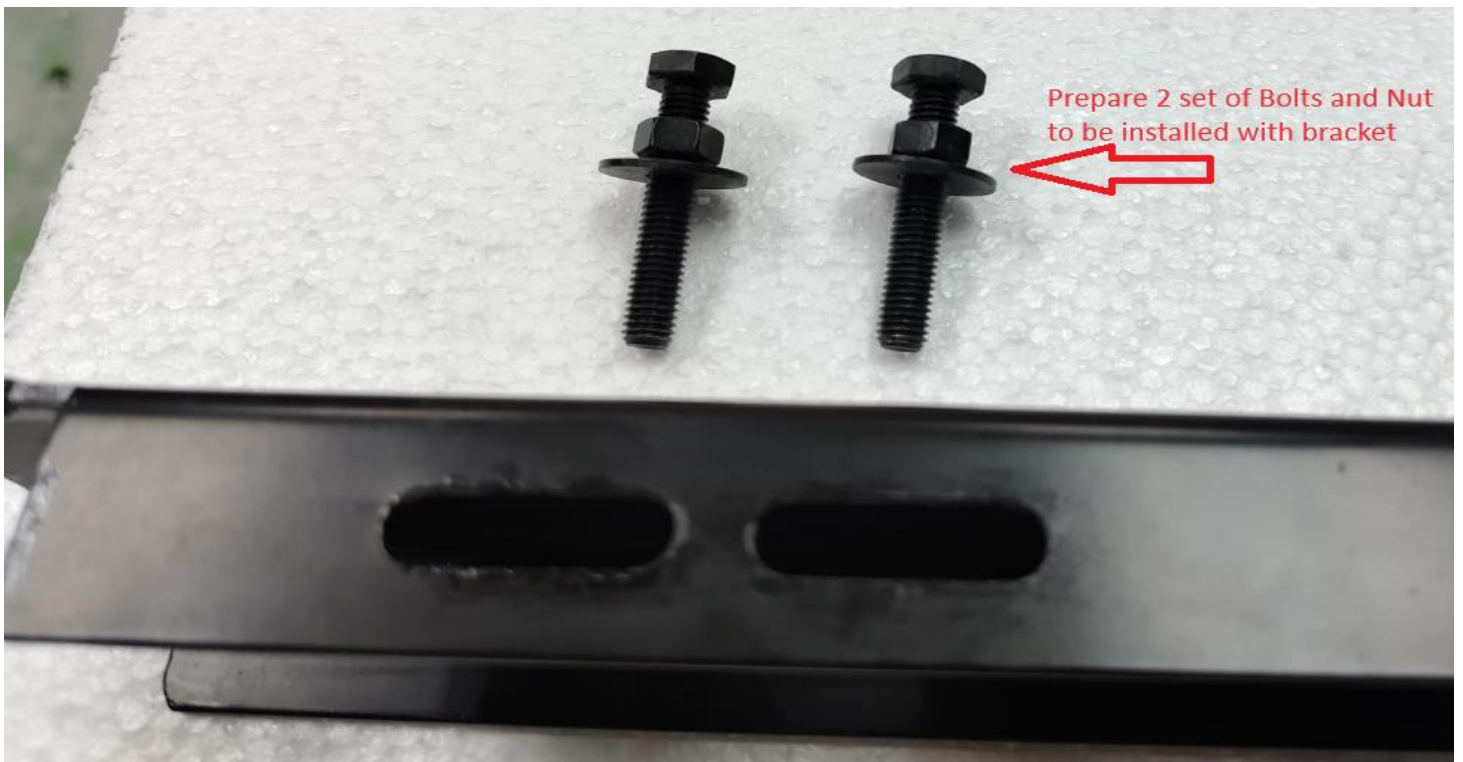
Step 1.

Fit the Bar on the Tub as per indication below.



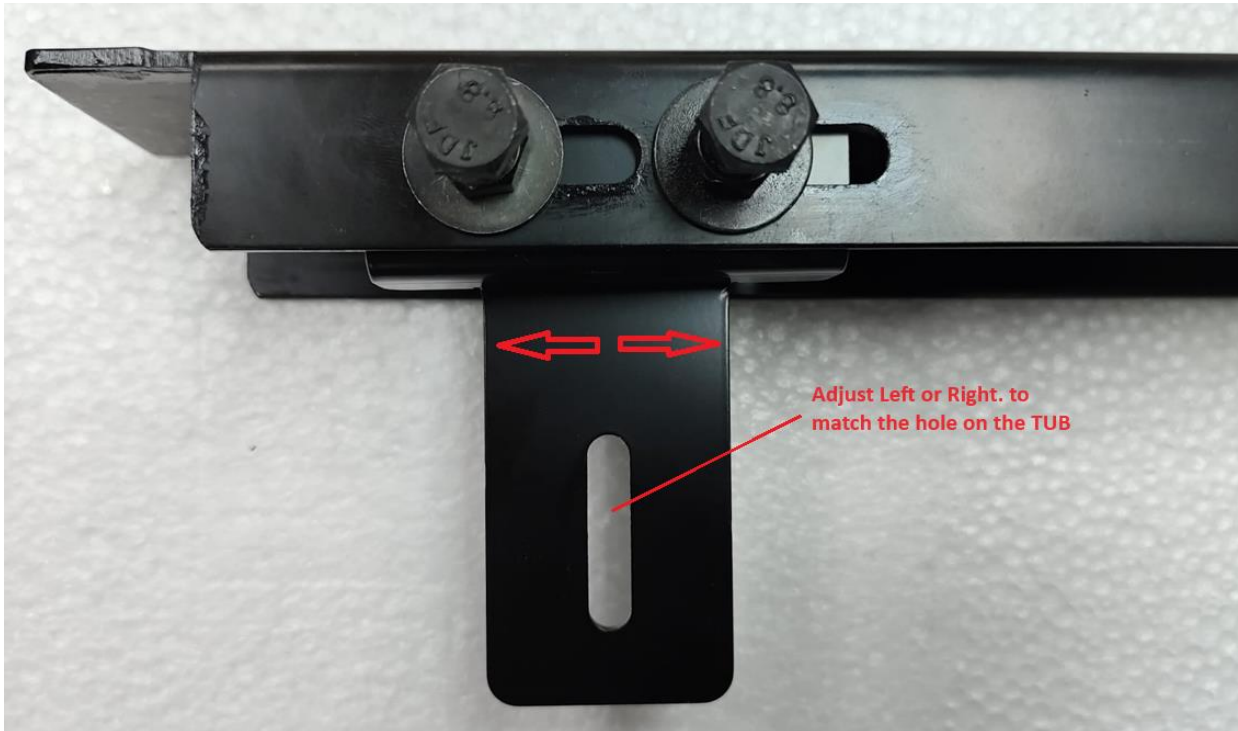
Step 2.

Prepare a set of bolts and nuts, used to fit the brackets.



Step 3.

Fit the bracket and adjust Left or Right to match the hole in the TUB



Step 4.

Tight the bolts and nuts and fit the Bracket to the TUB Using a POP Rivet



Once Fitted. Please repeat the same procedure with the Center and Right-side brackets