

4001 Tailgate/Slat Replacement Instructions

This set of instructions includes steps on how to replace both the Tailgate Assembly and also Slat Assembly. Depending on the part in need of replacing, please disregard the remaining steps/specifications.

Kit Includes:

- Tailgate Assembly **OR**
- Slat Assembly
- #2-56 Screws (two will be sent for every panel that needs to be removed)

Tools Required:

- 10 mm socket or nut driver
- #2 Phillips Screwdriver
- #1 Phillips Screwdriver

STEP 1: Remove driver lock stop from bracket

Use the 10 mm socket or nut driver.



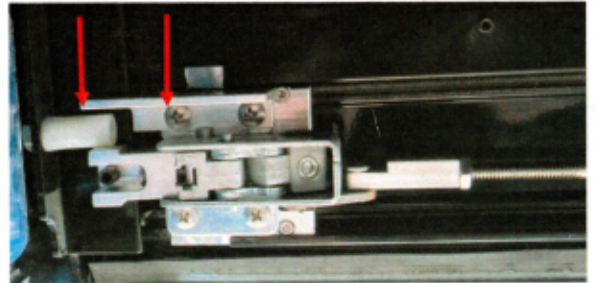
DR side lock stop
bracket

STEP 2: Remove passenger lock stop from bracket

Two different versions of the Passenger Side Lock were released. Please View the following figures to determine the correct version, and follow the steps for removing the passenger side lock stop.

If your Passenger Lock is this style:

Remove the [2] X 10-32 screws from the passenger side lock stop bracket on your cover using the #2 Phillips screwdriver.



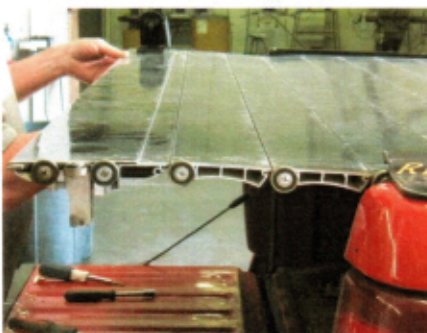
If your Passenger Lock is this style:

Remove the [2] X 10-32 screws from the passenger side lock stop bracket on your cover using the #2 Phillips screwdriver.



STEP 3: Roll cover out of rails

Roll the cover out of your rails until the tailgate is out of the rails about 1 foot.



Tailgate/Slat Replacement Instructions

STEP 4: Remove screws from tailgate

Using [2] people, bend the tailgate up or hold it up so that you have access to the screw. Remove the [2] X #2-56 screws from each side of the tailgate using the #1 Phillips Screwdriver.



STEP 5: Slide off tailgate

Slide the tailgate off of the rolling cover. Hold on to the rolling cover portion as you slide the tailgate off.

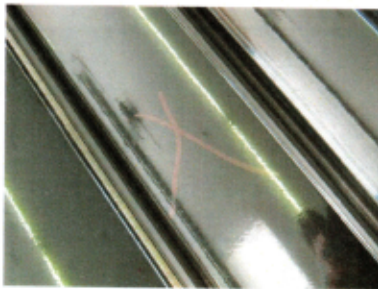


If you are only replacing the Tailgate Assembly and not any slats, then skip to Step 10

Steps 6 through Step 9 are for the replacement of a damaged slat.

STEP 6: Remove screws and mark damaged slat(s).

Using [2] people, bend the slat up and remove the [2] X #2-56 screws from each side of the slat using the #1 Phillips Screwdriver. This is the same procedure as step 4 but with slats instead of the tailgate assembly. If you have a number of slats to be removed lay a protective barrier onto a table top. Pull rolling cover out of canister and lay it top down on the table. Mark the slat with a magic marker to make it easier to keep track of the damaged slat.

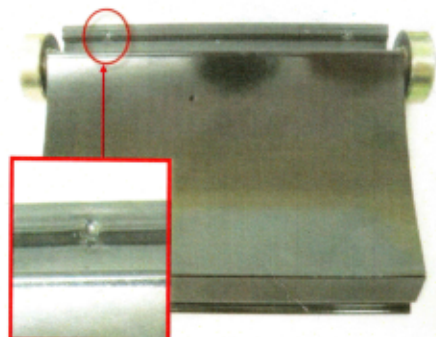


STEP 7: Slide out damaged slat(s).

Slide the slat or group of slats off of the rolling cover. Hold on to the rolling cover portion as you slide the slat off. This is the same procedure as step 5, but with slats instead of the tailgate assembly.



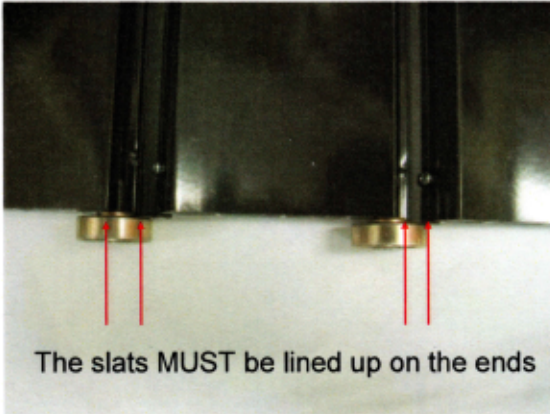
The replacement slat that you received will appear the same as the one shown to the right. The slat will have the correct size panel, hinge, and two bearings. The hinge will have two holes drilled into the hinge for the [2] x #2-56 screws which will be put back in once the slat is in place. It is important to use these pre-drilled holes to ensure that the screws are in the correct position.



Tailgate/Slat Replacement Instructions

STEP 8: Slide on new slats

Slide the rubber hinge of the slat you received into slats on your rolling cover. Use a small amount of rubbing alcohol for lubrication if needed. Slide on until the aluminum pieces are in line.



The slats **MUST** be lined up on the ends

STEP 9: Replace screws on tailgate

Bend the slat up and replace the [2] X #2-56 screws. One of these screws goes on each side of the tailgate 1/2" in from the end of the tailgate into the pre-existing holes in the hinge.



Repeat **STEP 8** and **STEP 9**, replacing one slat at a time or the group of slats that were removed, until all the slats have been re-installed.

It is very critical that all the slats are back in line as shown in STEP 7.

Steps 10 through Step 13 are to complete the replacement of a tailgate assembly.

STEP 10: Slide on new tailgate

Slide the tailgate you received onto the rubber hinge left on your rolling cover. Use a small amount of rubbing alcohol for lubrication if needed. Slide on until the aluminum pieces are in line.



STEP 11: Replace screws on tailgate

Bend tailgate up and replace the (2) X #2-56 screws. One of these screws goes on each side of the tailgate 1/2" in from the end of the tailgate.



STEP 12 Roll the rolling cover back into your rails and in 12 inches from the end of your rails.

STEP 13 Replace the driver side lock bracket with the 10 mm socket or nut driver, and replace the passenger side lock stop plate with the (2) 10-32 screw and #2 Phillips Screwdriver.